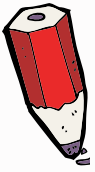


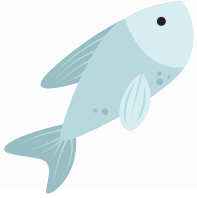
Kazi Kwaka



Shughuli 1: Tafuta chakula:



Je, unaweza kupata aina zote tofauti za vyakula ambavyo popo wanaweza kula katika utafutaji huu wa maneno? Kumbuka kutafuta nyuma na mbele, ubavu na juu na chini, kama vile popo mwenye njaa anayetafuta chakula.



What bats eat

T	T	E	F	W	E	D	F	C	S	S	M	W	S
M	N	T	O	E	T	U	I	S	C	R	I	O	A
L	T	A	B	O	S	S	S	B	T	N	G	N	S
M	O	M	I	E	G	C	H	O	I	O	R	S	I
O	H	O	M	O	D	S	T	C	E	S	N	I	E
S	S	H	F	C	F	N	M	E	M	T	M	I	G
Q	S	L	R	T	L	A	F	S	S	B	A	F	E
U	H	U	B	T	O	B	O	W	D	F	S	Q	M
I	T	S	E	T	W	N	I	S	O	D	T	Q	R
T	O	R	E	U	E	E	S	G	O	G	I	E	F
O	M	E	T	F	R	C	F	O	L	H	U	T	S
S	C	O	L	S	S	T	F	R	B	F	R	S	O
T	N	C	E	F	N	A	S	F	E	E	F	C	N
E	O	U	S	N	E	R	M	T	M	S	O	N	U

- INSECTS
- NECTAR
- FRUIT
- FISH
- FROGS
- MOSQUITOS
- BETLES
- FLOWERS
- BLOOD
- MOTHS



Play this puzzle online at : <https://thewordsearch.com/puzzle/3421819/>





Shughuli 2: Wakati wa chakula cha jioni!

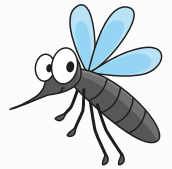


Linganisha kipengele cha popo na aina ya chakula wanachokula - kuna vidokezo vya kukusaidia kufanya hivi!

Nina macho makubwa na pua ndefu



Mlaji wa wadudu



Nina ulimi mrefu na hisia nzuri ya harufu



Mla matunda



Mimi ni mdogo na ninatumia echolocation kupata chakula changu



Mlaji wa nekta

