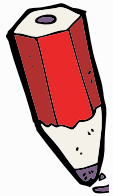
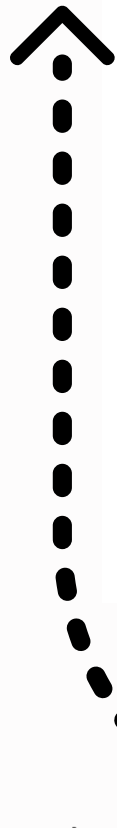
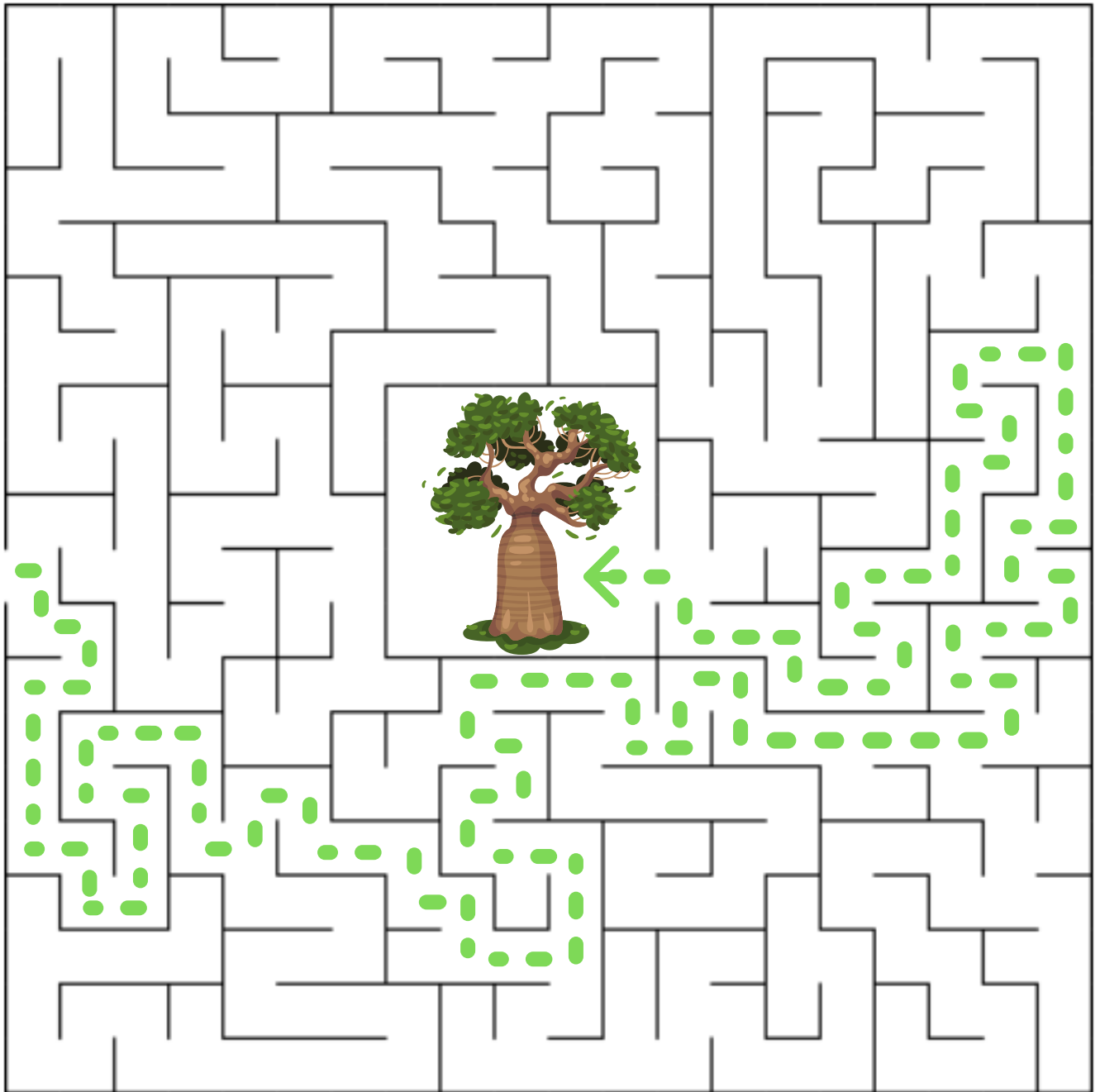
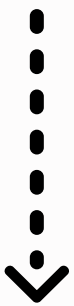


Over to you!



Activity 1:
Can you complete this maze and help the bat find its roost?

start here!



Help me get home!





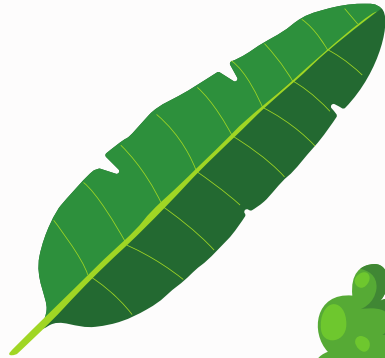
Activity 2:
Which of these places do you think bats roost?
Put a tick in the boxes next to the right answers

Over to you!

Trees



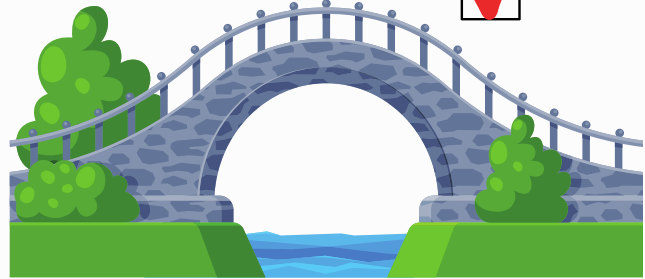
Banana leaves



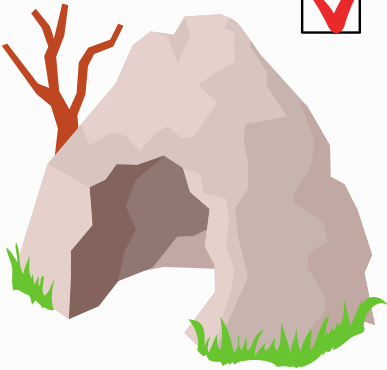
Cars



Bridges



Caves



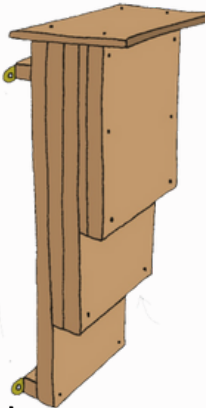
Houses



In the sea



In a bat box



Mines



In your bed

